

PRODUCT DESCRIPTION & TECHNICAL SPECIFICATIONS

Used to lower a ceiling. For creating a suspended plasterboard ceiling.

Trade name	Product name	Toggle & rose
Product dimensions	Height (in mm)	12
	Width (in mm)	17
	Length (in mm)	80
	Weight (in kg)	0.04
Material		Galvanised steel
Consumption	Average consumption (per m ²)	1.8
	Average consumption (per m)	0.6
Install information : All products	Unit pack : type	box
	Unit pack : height (in cm)	5
	Unit pack : width (in cm)	22
	Unit pack : depth (in cm)	25
	Unit pack : weight (in kg)	1.89
	Number of products / parcels (in items)	100

ADVANTAGES

- Classic and fast install
- Used to lower the height of the ceiling

AREA OF APPLICATION

- Creation of a suspended plasterboard ceiling.

REFERENCES & PACKAGINGS

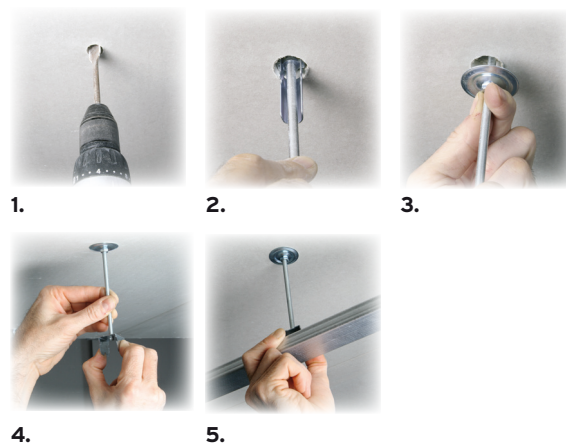
- Product reference : A02976
- Barcode : 3585501029769
- Packaging: Box of 100 items.
10 boxes per carton / 260 boxes per pallet.

REFERENCES TO TECHNICAL DOCUMENTS

- Customs nomenclature : 73181541

INSTRUCTIONS FOR USE

1. Drill the substrate \varnothing 16mm
2. Insert the toggle screwed to the threaded rod
3. Block the rose with a \varnothing 6mm nut
4. Screw the pivot rod bracket
5. Secure the furring to the assembly



DO YOU KNOW THE ASSOCIATED SEMIN PRODUCTS ?

- Threaded rods : the toggle is screwed to the threaded rod
- Nuts : used to block the toggle
- Pivot rod bracket : to screw to the threaded rod
- Furring : to attach to the assembly