

## PRODUCT DESCRIPTION & TECHNICAL SPECIFICATIONS

### Securing a pivot rod bracket in a false ceiling.

<b>Trade name</b>	Product name	Male threaded head screw
<b>Product dimensions</b>	Height (in mm)	10
	Width (in mm)	10
	Length (in mm)	77
	Weight (in kg)	0.013
<b>Material</b>	Galvanised steel	
<b>Consumption</b>	Average consumption (per m <sup>2</sup> )	1.8
	Average consumption (per m)	0.6
<b>Install information: all products</b>	Unit pack : type	Box
	Unit pack : height (in cm)	7.8
	Unit pack : width (in cm)	10.8
	Unit pack : weight (in kg)	1.3
	Unit pack : depth (in cm)	16.8
	Number of products / parcels (in items)	100

## ADVANTAGES

- Classic and fast install
- Strength of the screw
- Requires only a pivot rod bracket as an additional accessory

## REFERENCES TO TECHNICAL DOCUMENTS

- Customs nomenclature : 73181541

## REFERENCES & PACKAGINGS

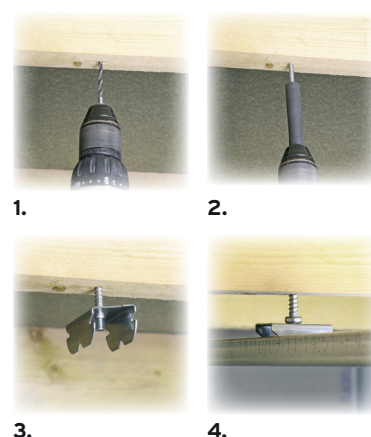
- Product reference : A02979
- Barcode : 3585501029790
- Packaging : Box of 100 items.  
600 boxes per pallet.

## AREA OF APPLICATION

The male threaded head screw is used for ceiling renovation.

## INSTALLATIE

1. Drill a hole in the wood.
2. Screw the male threaded head screw into the wood.
3. Screw in the pivot on the male threaded head screw.
4. Fix the furring to the pivot rod bracket.



MALE THREADED HEAD SCREW

## DO YOU KNOW THE ASSOCIATED SEMIN PRODUCTS ?

- Pivot rod brackets: the male threaded head screw is secured to the pivot rod bracket.