



PRODUCT DESCRIPTION & TECHNICAL SPECIFICATIONS

Designed for creating an acoustic insulation plasterboard false ceiling.

Trade name	Product name	Acoustic hanger
Product dimensions	Height (in mm)	45
	Width (in mm)	40
	Length (in mm)	60
	Weight (in kg)	0.08
Material	Galvanised steel and rubber	
Consumption	Average consumption (per m ²)	1.8
	Average consumption (per m)	0.6
Install information : all products	Unit pack : type	box
	Unit pack : height (in cm)	14
	Unit pack : width (in cm)	14
	Unit pack : depth (in cm)	24
	Unit pack : weight (in kg)	3
	Number of products / parcels (in items)	30

ADVANTAGES

- Levelling is easy thanks to its opening which allows you to slide it on a rod towards the frame, freeing the washer
- Its elastic element of exclusive design allows better securing of the washer, which promotes good operation and the attenuation of vibrations
- It is provided with a unique security system which avoids, subject to slight manual pressure, any alteration due to an excess load
- Load capacity of up to precisely 30 kg.
- F47 and F45 compatible.

AREA OF APPLICATION

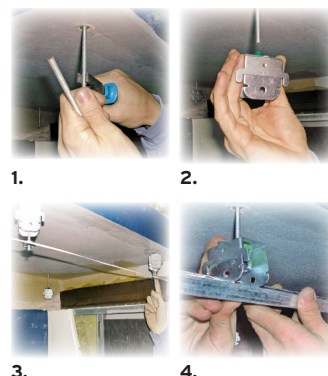
- Creation of acoustic insulation false ceilings.

REFERENCES TO TECHNICAL DOCUMENTS

- Customs nomenclature : 73269094
- Product reference : EN 13964

INSTRUCTIONS FOR USE

1. Screw the threaded rods into the securing plugs (e.g. use a brass plug if the ceiling is made of concrete).
2. Introduce the acoustic hangers through the threaded rods.
3. Screw in the bushings that will be used for support and levelling.
4. Fit the acoustic hangers into the support (furring) and slide over the security device, the support and the hanger then being completely attached.



REFERENCES & PACKAGINGS

- Product reference: A03165
- Barcode: 3585501031656
- Packaging: Box of 30 items. 203 boxes per pallet.

DO YOU KNOW THE ASSOCIATED SEMIN PRODUCTS ?

- Threaded rod: Screw the acoustic hanger to the threaded rod
- Furrings : To clip to the acoustic hanger.
- Brass plug : To insert the threaded rod, if the ceiling is made of concrete.